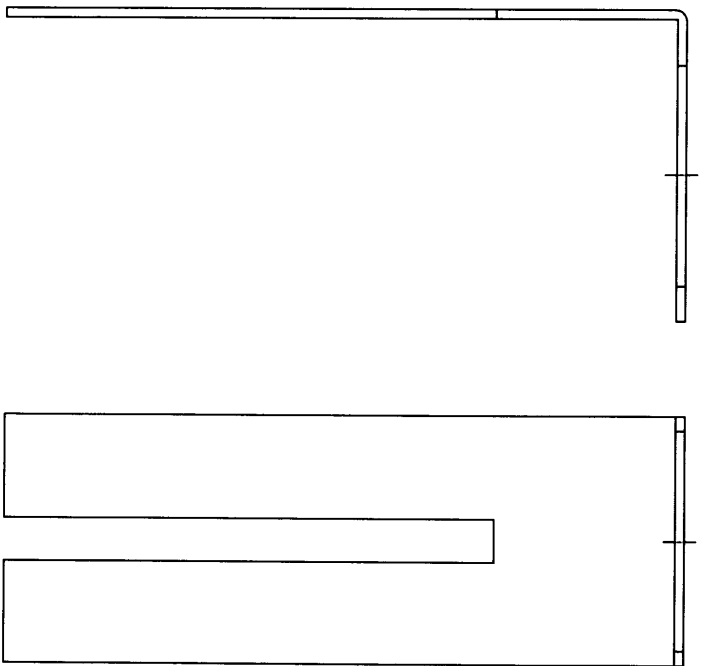
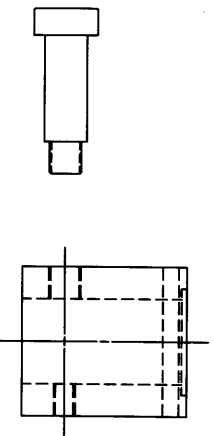
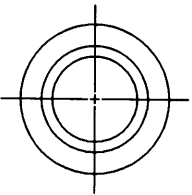


AR-1 ANTI-ROTATIONAL BRACKET



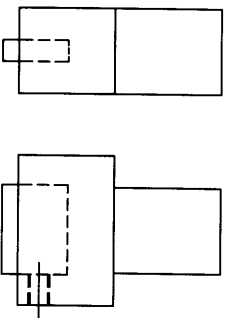
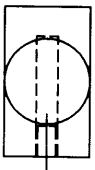
KEEPS CYLINDER PROPERLY ALIGNED

AD10-1 ADAPTOR SLEEVE



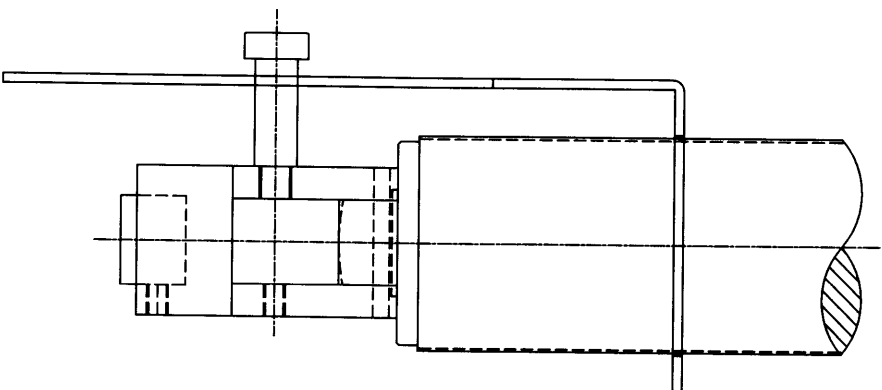
ATTACHES LIGHT-WEIGHT TOOLING TO CYLINDER RAM (5 LBS MAX)

M-1470 STAMP HOLDER



HOLDS UP TO 8 x 1/8 WIDE CHARACTERS

STAMPHOLDER, ADAPTOR, AND ANTI ROTATIONAL BRACKET ASSEMBLY WITH CYLINDER



MULTICYCL

The SPEED of AIR with the POWER of HYDRAULICS

MULTICYCL [®] Inc.

640 Hardwick Road, Unit 5
Bolton, Ontario
Canada L7E 5K1
(905) 951-0670
FAX (905) 951-0672