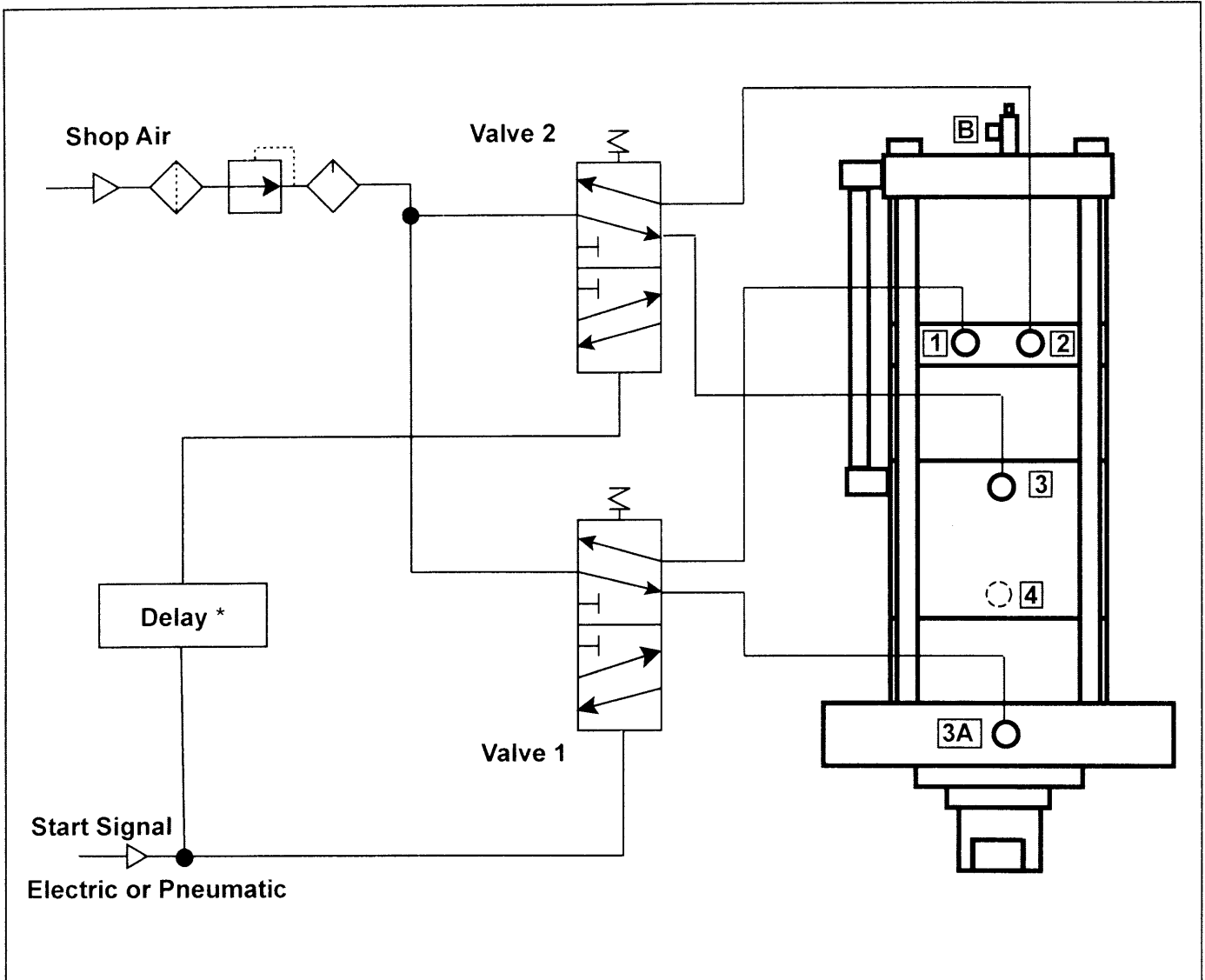


Power Boost Cylinders

Pneumatic Circuit for Power Boost Cylinders



* DELAY: The Power Stroke (High Pressure) can be initiated in many ways, including time delay, pressure build up, pressure decay or position sensing.

SEQUENCE: The sequence of operation must always be low pressure Approach Stroke first, and then the high pressure Power Stroke.