

The content in this preview is based on the last saved version of your email - any changes made to your email that have not been saved will not be shown in this preview.

You're receiving this email because of your relationship with MULTICYL Inc. Please [confirm](#) your continued interest in receiving email from us. To ensure that you continue to receive emails from us, add [sales@multicyl.com](mailto:sales@multicyl.com) to your address book today.

You may [unsubscribe](#) if you no longer wish to receive our emails.



Quick Links

[Multicyl.com](#)

[Newsletters](#)

[Videos](#)

[Press Selection Tool](#)

[Punching Basics Guide](#)

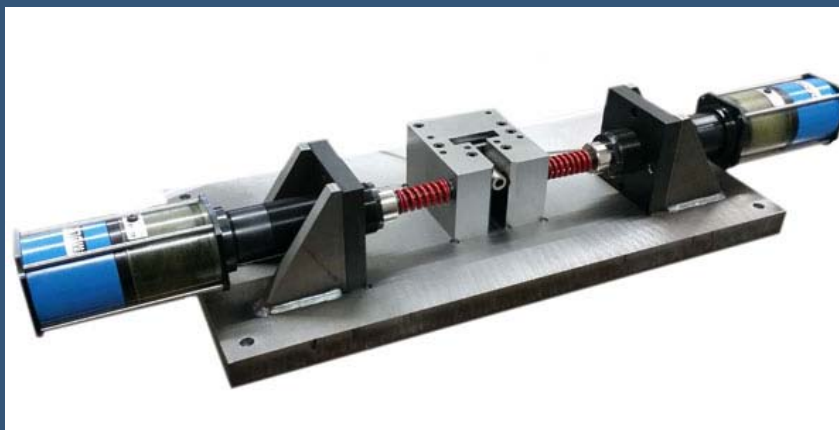


May 2015

Dear Karen,

We are pleased to showcase our double horizontal tube punching application. A tried and true Multicyl standard, this machine makes for a simple and effective method of punching holes in the opposing walls of a tube or extrusion. Both holes are positioned and aligned correctly every time and punched in a matter of seconds.

Click on the picture below to learn more about this Multicyl application and to see it in action.



For a quote on your custom requirement [contact us!](#)

To learn more about Multicyl products visit our website at [www.multicyl.com](http://www.multicyl.com)

Use our [Tonnage Calculator](#) to determine your force requirements.

To use our tonnage calculator select either the hole diameter or shear length option. Then select your material or fill in the tensile

## FREE Tonnage Calculator

strength of the material you are using (KSI).  
Fill in the rest of the data and hit calculate.  
You will be given the tonnage requirement  
and a list of potential Multicyl cylinders for  
the application.

Contact us for a free quote on your application

[www.multicyl.com](http://www.multicyl.com) [punch@multicyl.com](mailto:punch@multicyl.com)

Tel. 905.951.0670 US Toll Free. 800.388.6359 Fax.  
905.951.0672

[Forward email](#)

 **SafeUnsubscribe**

This email was sent to sales@multicyl.com by [sales@multicyl.com](mailto:sales@multicyl.com) |  
[Update Profile/Email Address](#) | Rapid removal with [SafeUnsubscribe](#)™ | [Privacy Policy](#).

MULTICYL Inc. | 640 Hardwick Road, Unit 1 | Bolton | Ontario | L7E 5R1 | Canada